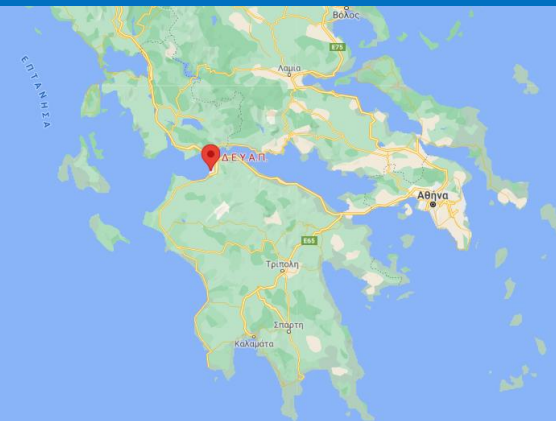


Case Study WASTE WATER MONITORING SYSTEM

TO THE INLET OF WATER TREATMENT PLANT OF WASTE WATER TREATMENT UTILITY OF PATRAS CITY



Project ID:

Supply and installation of integrated waste water monitoring system to the inlet of waste water treatment plant.

The system has been installed in account of Waste and Drinking water treatment utility of Patras city.

The system use last generation sensors and configurations with high accuracy and low maintenance and consumables requirements.

It is supported by powerful software for automatic process and debugging of the measurements.

IN BRIEF:

System : On-line waste water monitoring system

Area : Patras (Peloponnese)

Period : May 2020



ADMINISTRATOR:

Waste and Drinking water treatment utility of Patras city.

Important:

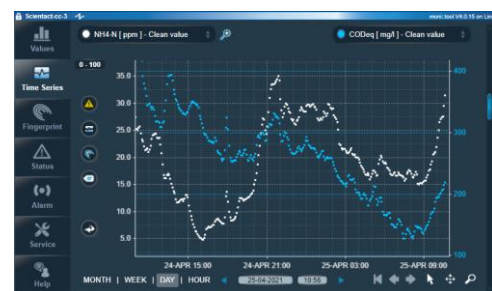
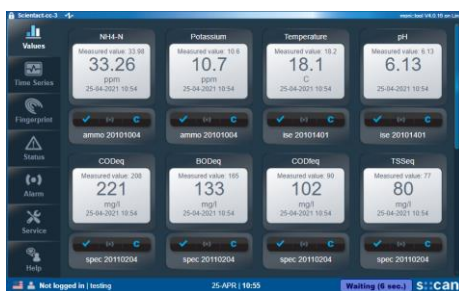
Access to the data via internet (telemetry)

Important:

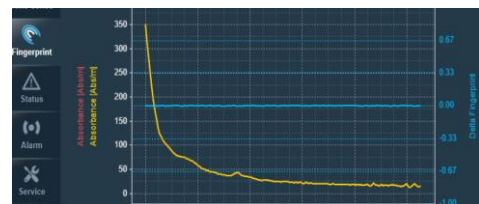
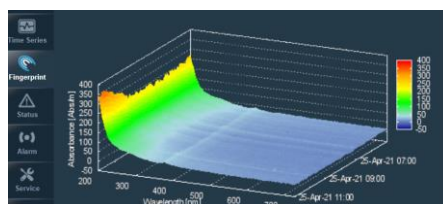
Measured parameters

- ❖ BODeq
- ❖ CODeq
- ❖ TSSeq
- ❖ DOCeq
- ❖ UV254t
- ❖ UV254f
- ❖ NO3-Neq
- ❖ pH
- ❖ NH4-N
- ❖ Potassium
- ❖ Temperature
- ❖ Full absorption spectrum

The system measures all the parameters every 2 minutes. It has the ability for “self-training” and automatic detection of unusual conditions in the water quality footprint.



It receives UV/VIS absorption spectrums and via integrated algorithms, it detects events.



Contact info Thessaloniki:

16 Kanari str, 54644
Thessaloniki - Hellas
Tel. +30 2310 946.126
Fax: +30 2310 947.005
scientact@scientact.com.gr
www.scientact.com.gr

Contact info Athens:

14 Etolias str, 15231
Halandri , Athens - Hellas
Tel. +30 210 67.28.585
scientact@scientact.com.gr
www.scientact.com.gr